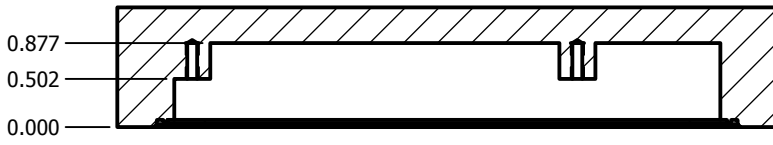


2

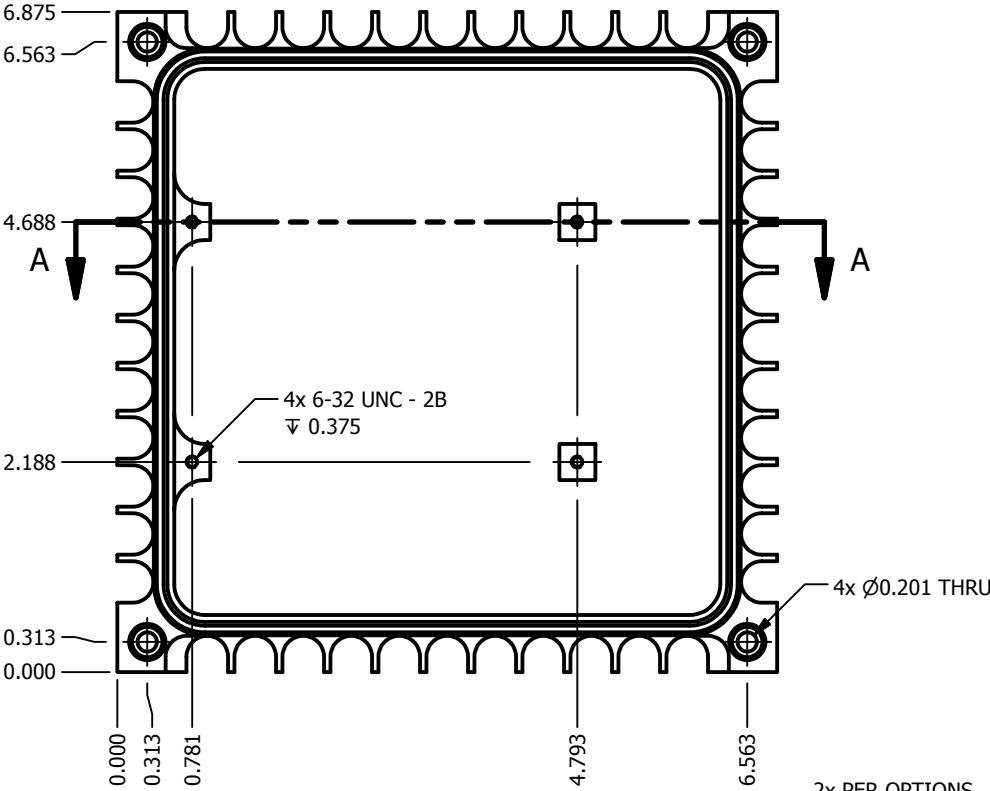
1

MAT'L
Aluminum-6061

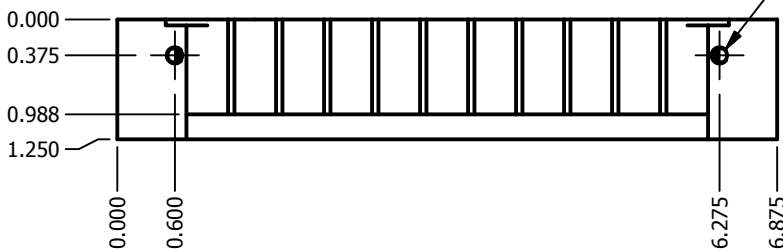
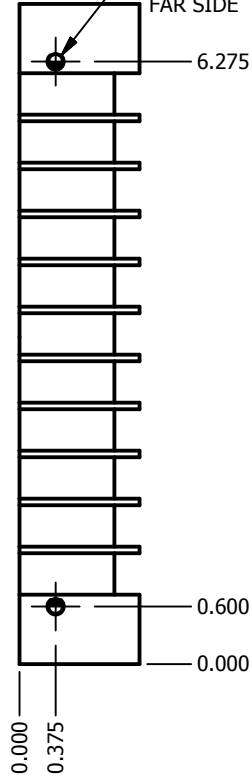
MASS
0.58 kg



SECTION A-A



2x PER OPTIONS
TABLE
NEAR SIDE &
FAR SIDE



2x PER OPTIONS
TABLE
NEAR SIDE &
FAR SIDE

OPTIONS TABLE		
NO FINISH OPTION		-0000
CLEAR CHROMATE PER MIL-C-5541E CLASS 1A.		-0001
YELLOW CHROMATE PER MIL-C-5541E CLASS 1A.		-0002
CLEAR CHROMATE PER MIL-C-5541E CLASS 3.		-0003
YELLOW CHROMATE PER MIL-C-5541E CLASS 3.		-0004
CLEAR ANODIZE PER MIL-A-8625 TYPE II CLASS 1.		-0005
BLACK ANODIZE PER MIL-A-8625 TYPE II CLASS 2.		-0006
CUSTOM FINISH OPTION.		-000X
TUMBLED FINISH.		-0010
BEAD-BLASTED FINISH.		-0020
NO SIDE MOUNTING OPTION.		-0000
10-32 UNF - 2B 0.625" SIDE MOUNTING.		-0100
M5.0 X 0.8 - 6H 0.625" SIDE MOUNTING.		-0200
10-32 THREADED INSERTS FOR SIDE MOUNTING.		-0300
M5.0 X 0.8 THREADED INSERTS FOR SIDE MOUNTING.		-0400
CUSTOM SIDE MOUNTING OPTION.		-000X
4-40 UNC-2B PC/104 BOARD MOUNTING.		-0000
M3.0 X 0.5 - 6H PC/104 BOARD MOUNTING.		-M000

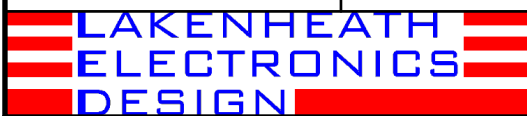
RoHS COMPLIANT FINISH

BASE PART NO LED-MP-2602	
DRAWN T. Seeley	DATE 4/3/2008
CHECKED	DATE
QA	DATE
MFG	DATE
APPROVED	DATE

LAKENHEATH ELECTRONICS DESIGN, INC.

BETHESDA, MD 20814 TEL: 301-404-0386
www.lakenheathelectronics.com

TITLE
LID, FLUTED, ALUMINUM, WITH DISK DRIVE MOUNTS



SIZE A	CAGE CODE 4JQE2	DWG NO PR-LED-MP-2602	REV -
SCALE: NONE		LAST UPDATE: 090216 1659 TDS	SHEET 1 OF 1

COPYRIGHT 2005, 2006, 2007, 2008, 2009 LAKENHEATH ELECTRONICS DESIGN, INC.

C:\Inventor\Libraries\Hardware Enclosures\LED\FlutedRings\Drawings\PR-LED-MP-2602.ipt
C:\Inventor\Libraries\Hardware Enclosures\LED\FlutedRings\Parts\FLSM_2602.ipt